



CIB #: CIB00038
Date: Sept 2017
Status: Non-confidential

Subject: V5.1 Customer Release Notes

NOTE: This new SW release is for Windows 7 Operating System ONLY and will not work on Windows XP. It supports SLS sPro™ 60 HD & HD-HS, SLS sPro™ 140 and 230 TruTemp & HS TruTemp platforms.

Improvements and Fixes

○ Sinter v5.1.18

- Added checks in the software for Laser, Part heaters and Feed heaters to meet NRTL safety standards. NOTE: Only for machines with NRTL hardware.
- Updated Feed Forward stabilization to improve X and Y Scanner performance.
- Improved performance in scanner re-homing.
- To relieve stiction in scanners, added high torque moves during DSP initialization.
- Added an improvement to idle the scanner motors when build is not running, which will improve longevity.
- Added logging for DSP Initialization and scanner idle routine.
- Improved DSP diagnostic capabilities like DSP Crash monitoring and logging. (Refer to **DSP Realtime Monitor** CIB for details).
- Added corner heater controls in Manual Ops for TruTemp upgraded SLS sPro™ 140 and 230 machines.
- Added a check in software to prevent burning of CCIF boards due to high in-rush of current.
- Other bug fixes, User Interface/User Experience and quality improvements.

○ Build Setup v5.1.8

- Links to Material Guides are now updated.

Note: Adobe Reader is pre-installed on the printer PC to open Material Guides.

For more information,
Contact 3D Systems' Customer Hotline at (800) 793-3669,
Or contact your local account representative



Customer Information Bulletin

CIB

CIB #: CIB00038
Date: Sept 2017
Status: Non-confidential

Subject: V5.1 Customer Release Notes

- Added support for CastFormPS, DuraFormGF and DuraForm HST materials for SLS sPro™ 140 and 230 machines which were missing in last V4.016 release.
- Updated machine and material configurations files.
- Other bug fixes, UI/UX and Quality improvements.
- **RealMonitor v5.1.8**
 - Added the ability to save a 3dl log file remotely. You can set the default 3dl log file directory in Real Monitor 'Preference' dialog.
 - Added support to monitor overflow transport pressure and overflow sensors.
- **LogManager v5.1.8**
 - Added new **dspifError** and **Build History** tabs to .3dl file.

For more information,
Contact 3D Systems'
Customer Hotline at
(800) 793-3669,
Or contact your local
account representative

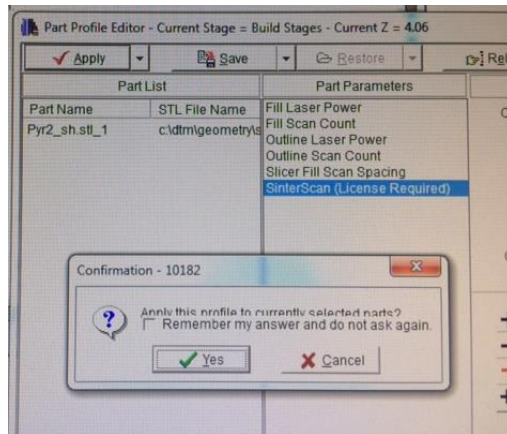


CIB #: CIB00038
Date: Sept 2017
Status: Non-confidential

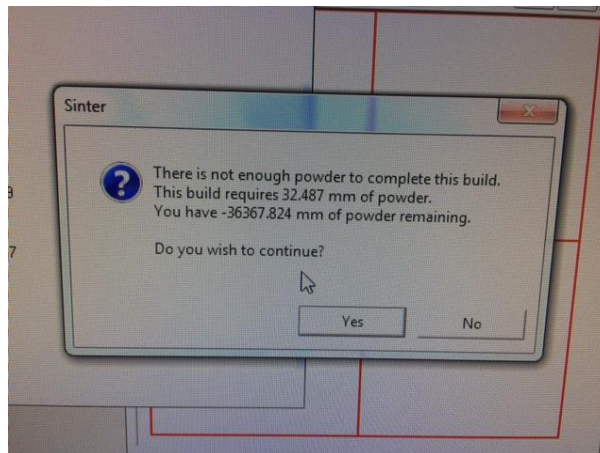
Subject: V5.1 Customer Release Notes

Known Issues and Recommendations:

1. Layout issue in the "Part Profile Editor" confirmation message.



2. **sPro™ 140 and 230 platforms:** Sinter warning informing there is not enough powder to complete this build. A negative value for "powder remaining" is displayed.



For more information,
Contact 3D Systems'
Customer Hotline at
(800) 793-3669,
Or contact your local
account representative

- Check if **IRS** is connected correctly and functioning. At times due to issues in **IRS** a user can see this warning.

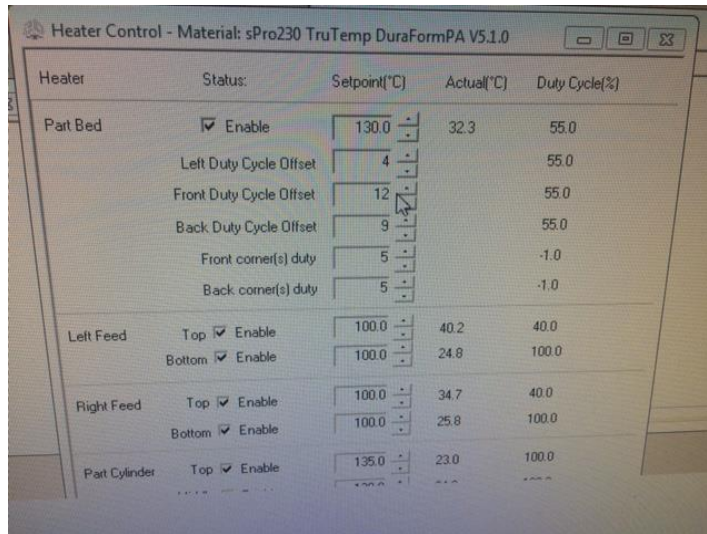


CIB #: CIB00038
 Date: Sept 2017
 Status: Non-confidential

Subject: V5.1 Customer Release Notes

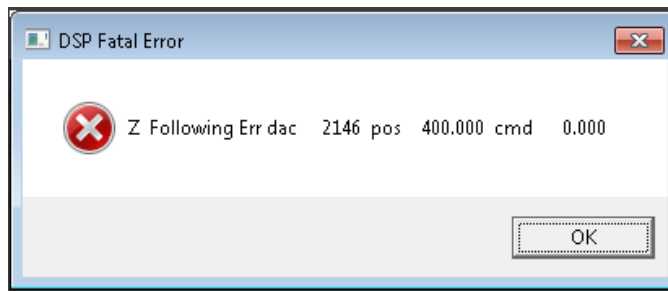
3. Part bed heater “Duty Cycle (%)” display issues in “Heater Control” window of “Manual Ops”

When Sinter and DSP starts up fresh, you may see incorrect values for Part bed heater “Duty Cycle (%)”. At times negative values are displayed on SLS sPro™ 140 and 230 machines



- You need to edit the set point (click **up** or **down** arrows) to get correct duty cycle %.

4. At times during DSP initialization, a **Z following error** is reported. Check below screenshot:



- User can retry initializing the DSP. You should be able to get through this error in maximum 2 or 3 attempts.

If you see this error often and cannot get through it on retry, please contact 3DSystems.

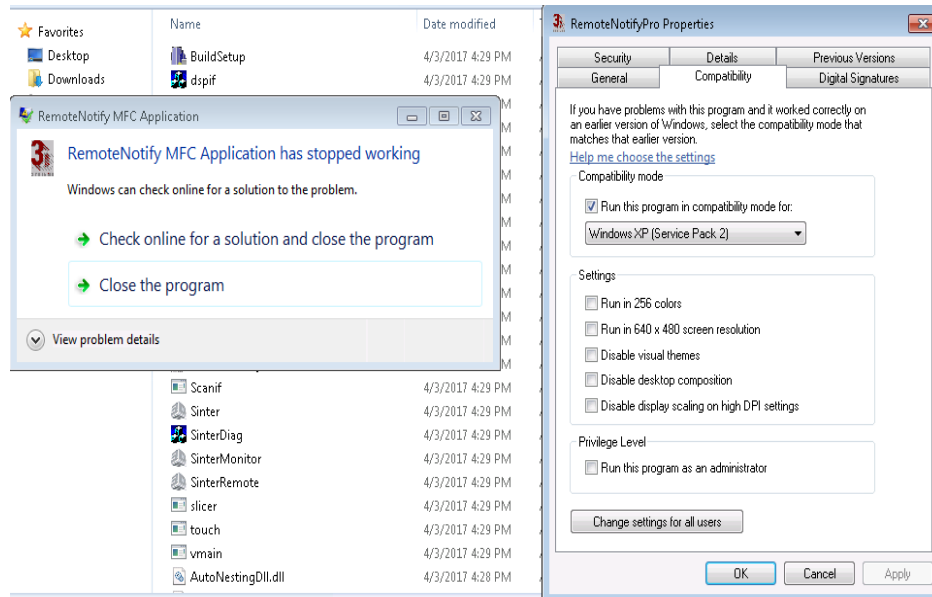
For more information,
 Contact 3D Systems' Customer Hotline at (800) 793-3669,
 Or contact your local account representative



CIB #: CIB00038
Date: Sept 2017
Status: Non-confidential

Subject: V5.1 Customer Release Notes

5. Power-cycle the machine at least once a month to avoid DSP crashes.
6. On closing RemoteNotifyPro.exe on Windows 7, it reports as stopped working.



- User can acknowledge this and can continue workflow without any performance impact

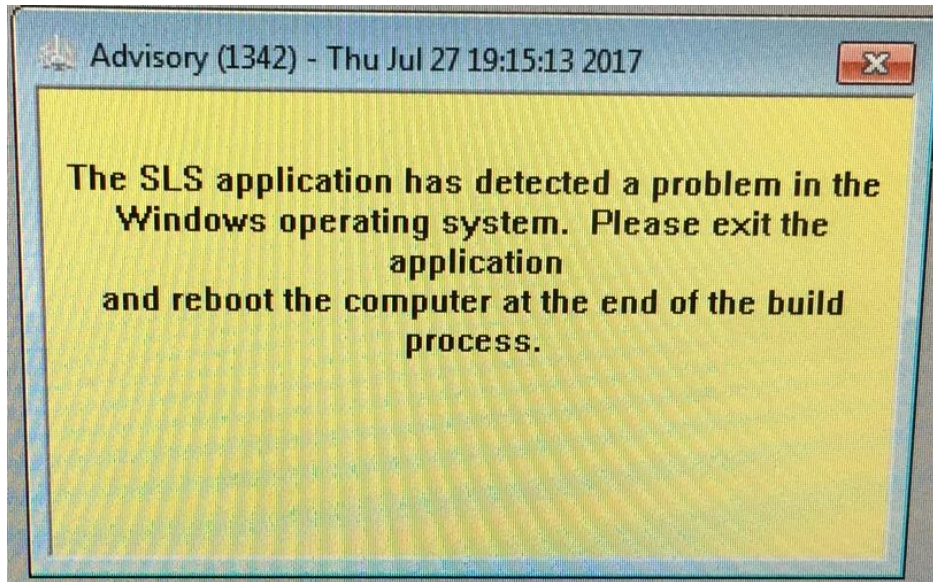
For more information,
Contact 3D Systems'
Customer Hotline at
(800) 793-3669,
Or contact your local
account representative



CIB #: CIB00038
Date: Sept 2017
Status: Non-confidential

Subject: V5.1 Customer Release Notes

7. Rarely you may see below Advisory screen:



- It is recommended not to close this Advisory window nor Add/Delete parts while the build is in-progress. Closing this window will close Sinter and terminate your build.

So please ignore this “Advisory” and you should be able to continue your build. You can reboot your computer after your build completes.

For more information,
Contact 3D Systems’
Customer Hotline at
(800) 793-3669,
Or contact your local
account representative