

Advisory



Upgrade / Repair / Retrofit



Safety Alert

Cart Initialization Update

ProJet™ 6000/7000

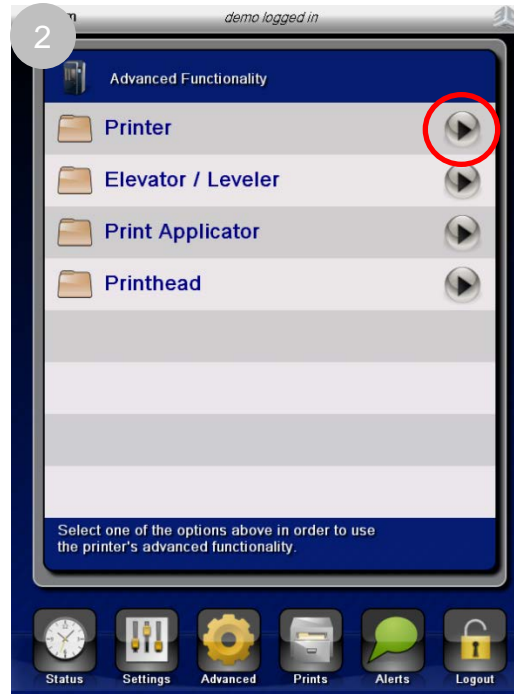
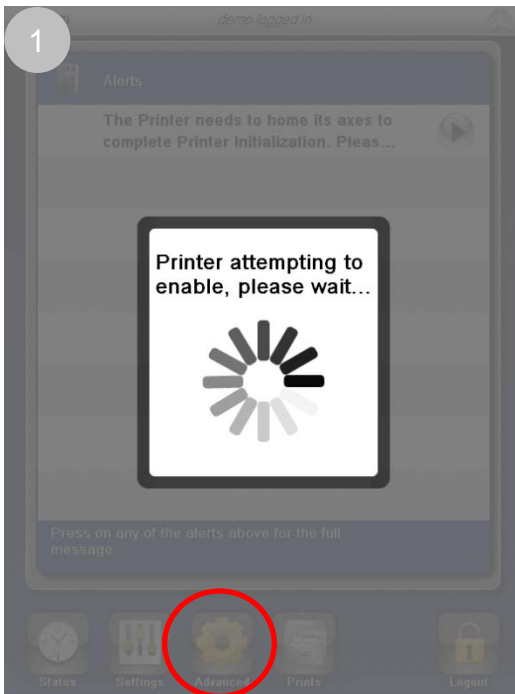
Purpose: This document gives an updated procedure for initializing a cart, as listed in the ProJet® 6000-series & 7000-series Control Software Version 1.4.2116.0 Release Notes.

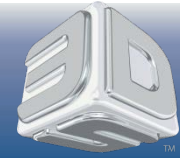
UPDATE: Initialize Cart Button

The printer no longer automatically tries to initialize the cart or print tray via the Alerts screen. This functionality has been moved to the Advanced...Printer screen and is started by pressing the "Initialize New Cart" button.

Software Command Sequence

1. After the system has been enabled and the new material cartridge has been inserted into the cart, choose the "Advanced" button.
2. Choose the "Printer" folder arrow in the Advanced Menu.
3. Choose "Initialize New Cart."





Advisory



Upgrade / Repair / Retrofit

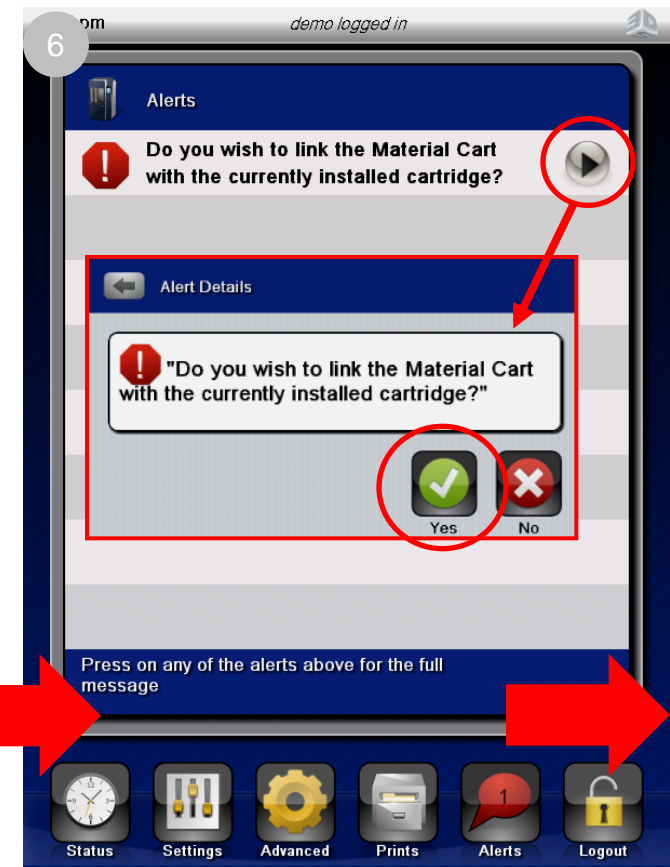
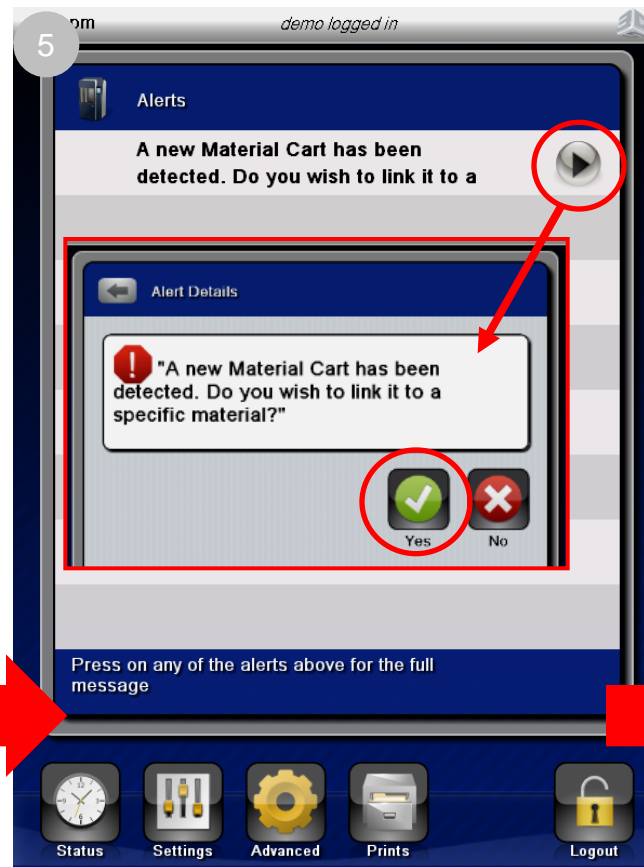
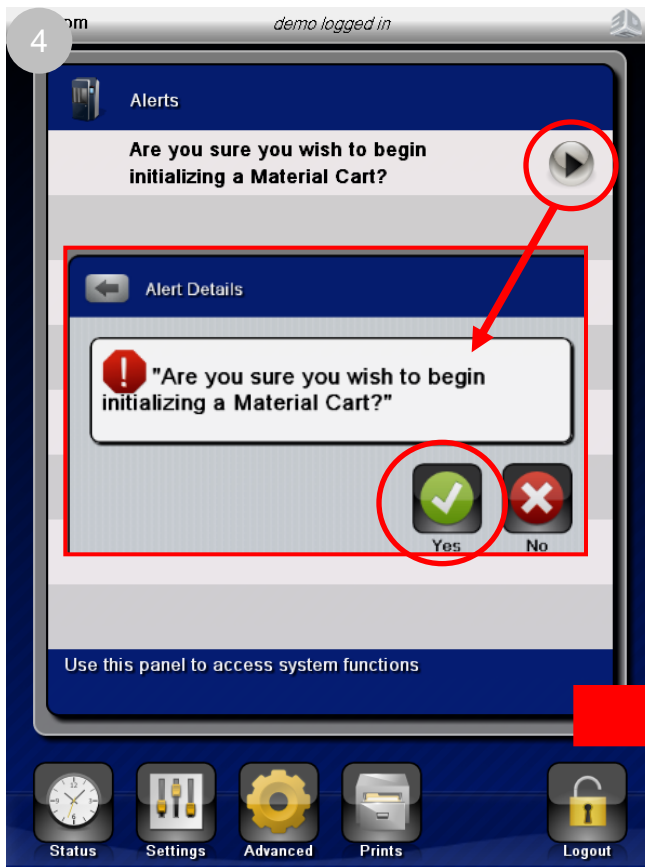


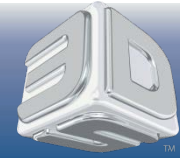
Safety Alert

Cart Initialization Update

ProJet™ 6000/7000

4. You will first be prompted to initialize a material cart. Press the Arrow button to proceed.
5. Follow the prompts to link the cart to a specific material. When prompted, choose “Yes.”
6. You will be asked to link the cart with the currently installed material. Press the Arrow button and choose “Yes” at the prompt.





Advisory



Upgrade / Repair / Retrofit



Safety Alert

Cart Initialization Update

ProJet™ 6000/7000

7. You will be prompted to change the material associated with the currently installed Print Tray. Press the Arrow button and choose "Yes."

After pressing "Yes," the cart will be successfully initialized with the new material and you may proceed with normal operations.

